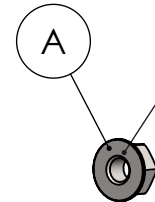


Extra nuts to be used with original bolts that mount the original exhaust hanger bracket. This will allow you to remove the original hanger bracket but re-use the bolts as to not leave empty holes once the bracket is removed.

S.s end cup set
cod.309746701R

Muffler kit
Cod.3015201483UR

Outer sleeve
replacement kit
cod.0815200008R



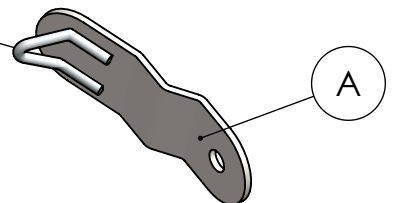
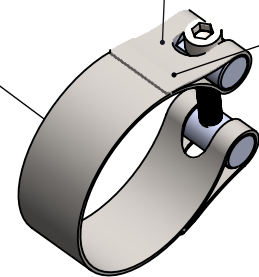
Manifold clamp
Cod.300057530R



Aluminium plate
cod.206925R

Muffler repack kit
cod.414204R

Spring and rubber
replacement kit
Cod.303949001R



ART. 15201CU - SPARE PARTS

YAMAHA YZF-R1 / M

Ⓐ FITTING KIT cod.3015201601R