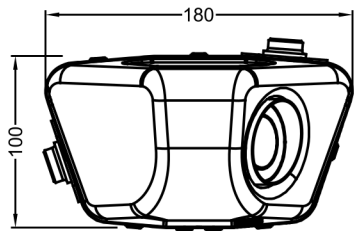
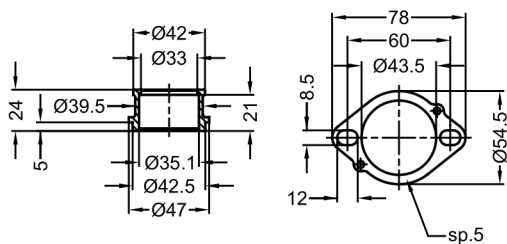


VISTA DA "A"

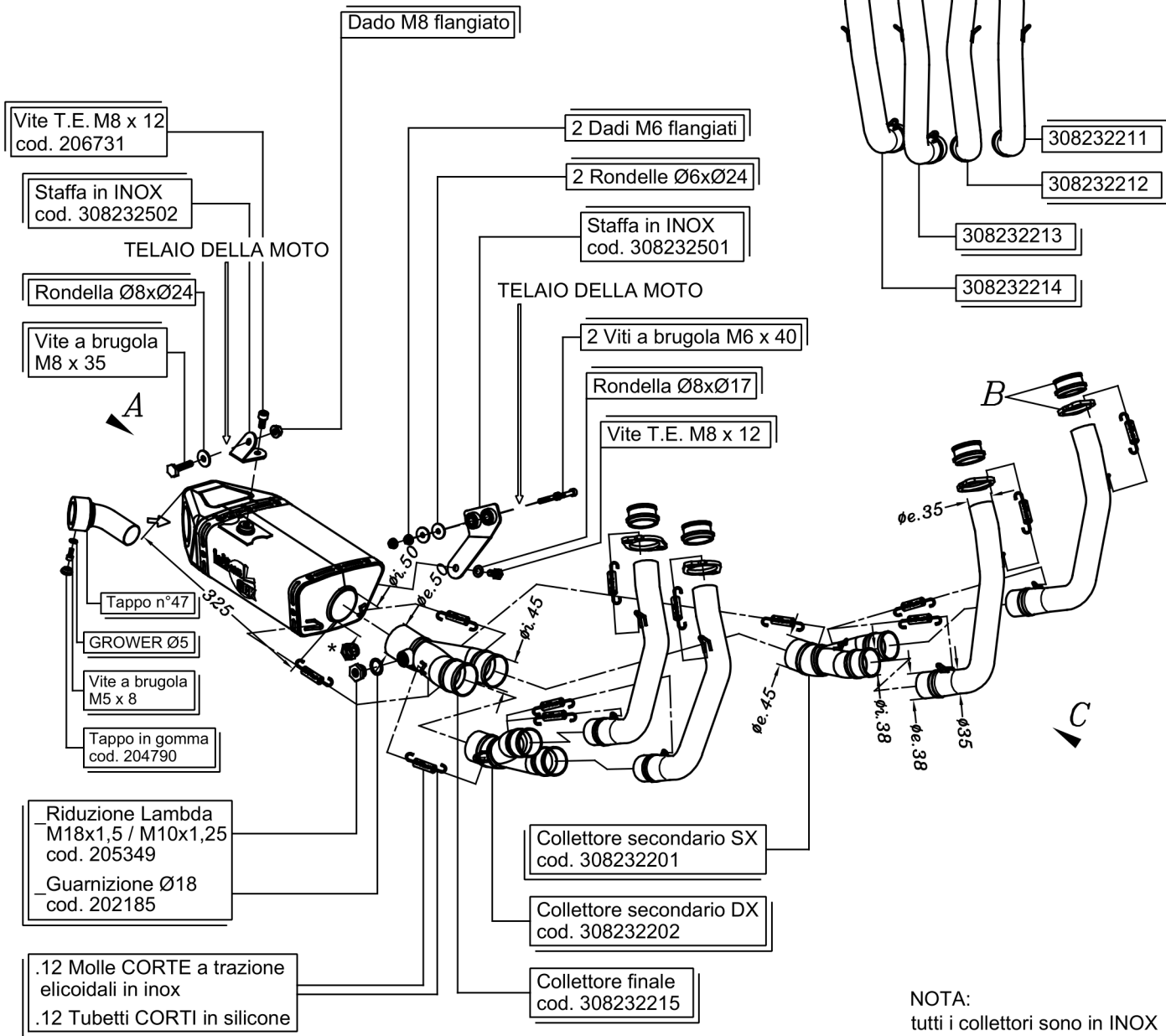
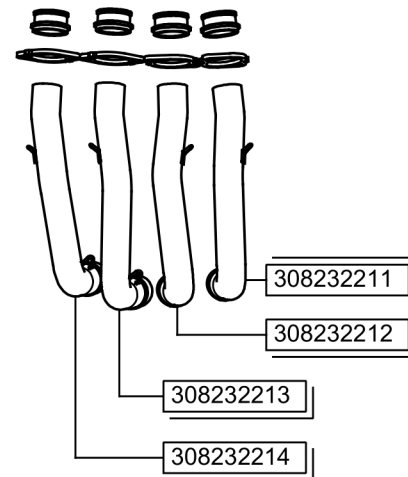


VISTA "B"

Boccole "205752" Flange "46D"



VISTA DA "C"



NOTA:
tutti i collettori sono in INOX

* Componente fornito in confezione e da utilizzare solo sulle motociclette non dotate di sonda Lambda
* Tappo M18x1,5 h.9 (cod.201029)

ART.8232U
XJ6 DIVERSION F - XJ6 DIVERSION - XJ6
FULL SYSTEM 4/2/1 - UNDEBODY - STAINLESS S.