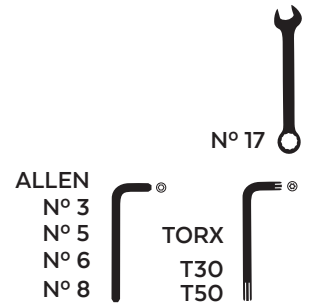
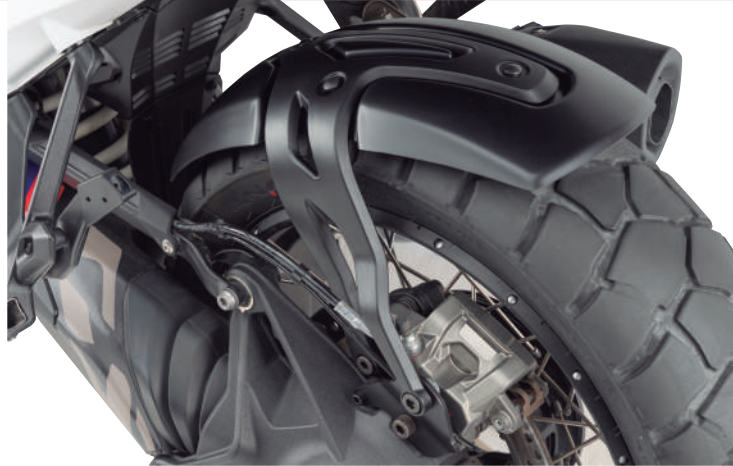


BMW R1300GS '23- / R1300GS ADVENTURE '24-

M O U N T I N G I N S T R U C T I O N S

REF 21895

GUARDABARROS TRASERO / REAR MUDGUARD



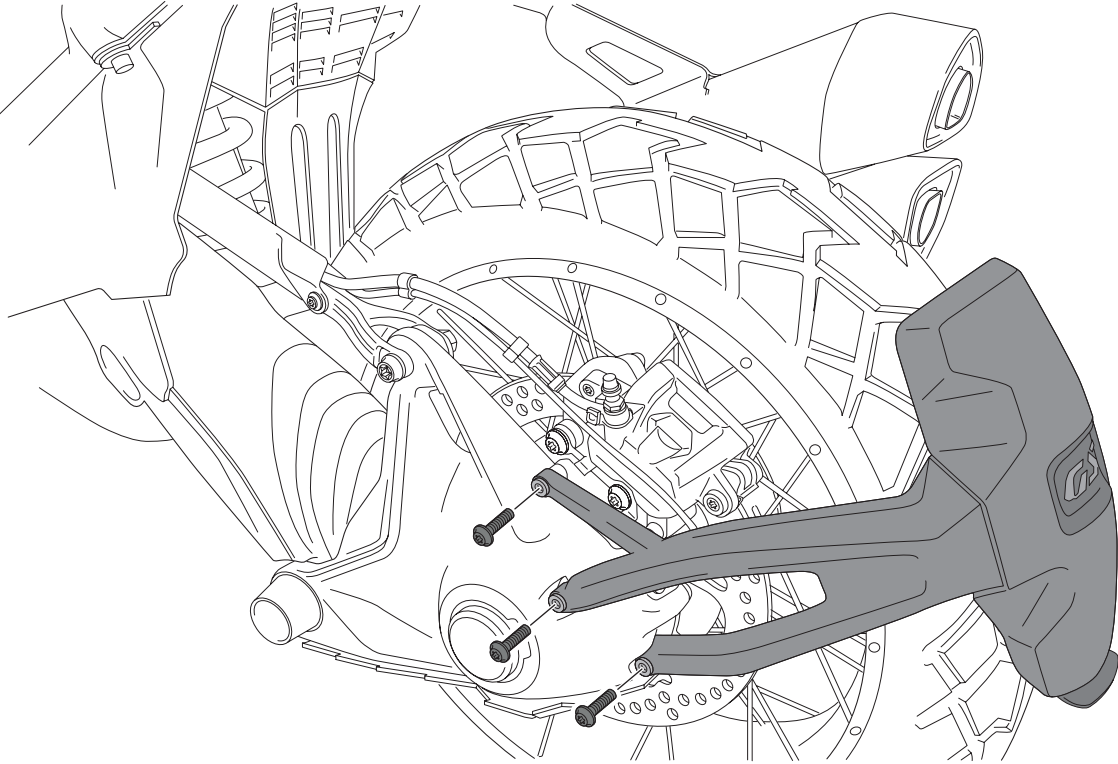
ID	PIEZA/PART	DESCRIPCIÓN	DESCRIPTION	QTY	REF
1		Guardabarros	Rear Mudguard	1	21895 J/C M3
2		Soporte adaptador	Adapter support	1	SOPORIP4--21895
3		Soporte aluminio	Aluminum Support	1	SOPORFUN-21895-
4		Silentblock	Silentblock	3	SILENBGONE--064
5		Tornillo Allen M5x14 ISO 7380	M5x14 ISO 7380 Allen screw	3	TORNI-I7380-610
6		Casquillo con valona M5	M5 Bush with flange	3	CASQUI-----517
7		Arandela Grower DIN127 M6	DIN127 M6 washer	3	ARAND-D127--528
8		Tapón tornillo M5 ISO 7380	M5 ISO 7380 screw cap	3	TAPON-----85
9		Tornillo Allen M10x55 DIN 7984 (A4 Inox)	M10x55 DIN 7984 (A4 Inox) Allen screw	1	TORNI-D7984-940
10		Tuerca autoblocante M10	M10 lock nut	1	TUEA-D985.8-M10
11		Casquillo Ø10,5 xØ14 x20 mm	Ø10,5 xØ14 x20 mm Arrowhead	1	CASQUII01420299
12		Tornillo Allen M10x35 DIN 7984 (A4 Inox)	M10x35 DIN 7984 (A4 Inox) Allen screw	1	TORNI-D7984-941
13		Tornillo Allen M10x20 DIN 7984 (A4 Inox)	M10x20 DIN 7984 (A4 Inox) Allen screw	1	TORNI-D7984-942
14		Tornillo Allen M6x10 DIN 7984 (A4 Inox)	M6x10 DIN 7984 (A4 Inox) Allen screw	2	TORNI-D7984-943
15		Tornillo Allen M6x16 DIN 7984 (A4 Inox)	M6x16 DIN 7984 (A4 Inox) Allen screw	1	TORNI-D7984-944
16		Tornillo Allen M6x30 DIN 7984 (A4 Inox)	M6x30 DIN 7984(A4 Inox) Allen screw	1	TORNI-D7984-946
17		Abrazadera cables negra 100x2,5mm	100x2,5mm cables ties	1	BRIDANI100X2'5-N

BMW R1300GS '23- / R1300GS ADVENTURE '24-

INSTRUCCIONES DE MONTAJE - MOUNTING INSTRUCTIONS - MONTAGEANLEITUNG

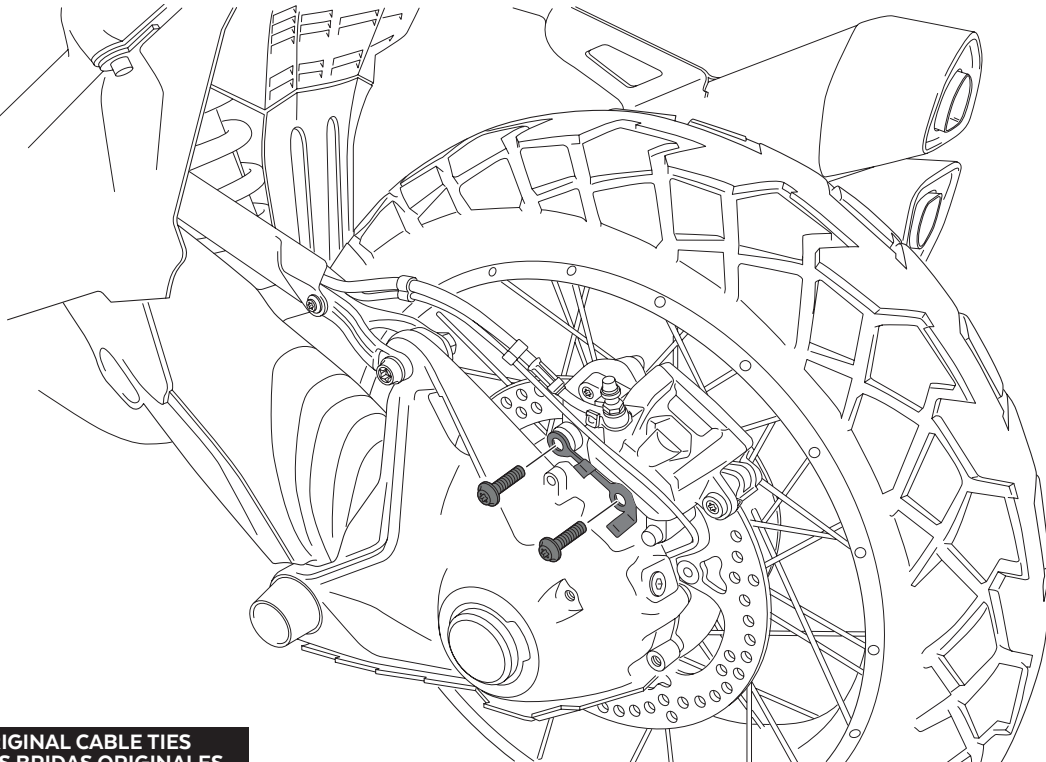
1

DISASSEMBLY
DESMONTAJE



2

DISASSEMBLY
DESMONTAJE



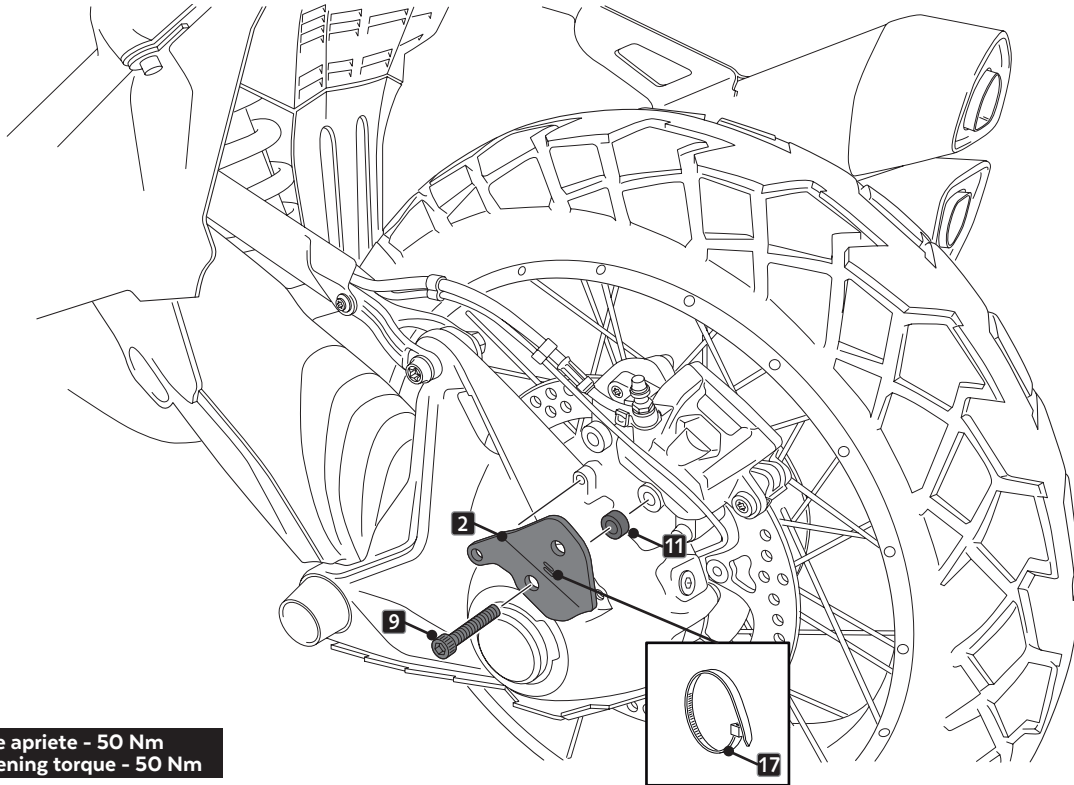
⚠ REMOVE ORIGINAL CABLE TIES
RETIRAR LAS BRIDAS ORIGINALES

BMW R1300GS '23- / R1300GS ADVENTURE '24-

INSTRUCCIONES DE MONTAJE - MOUNTING INSTRUCTIONS - MONTAGEANLEITUNG

3

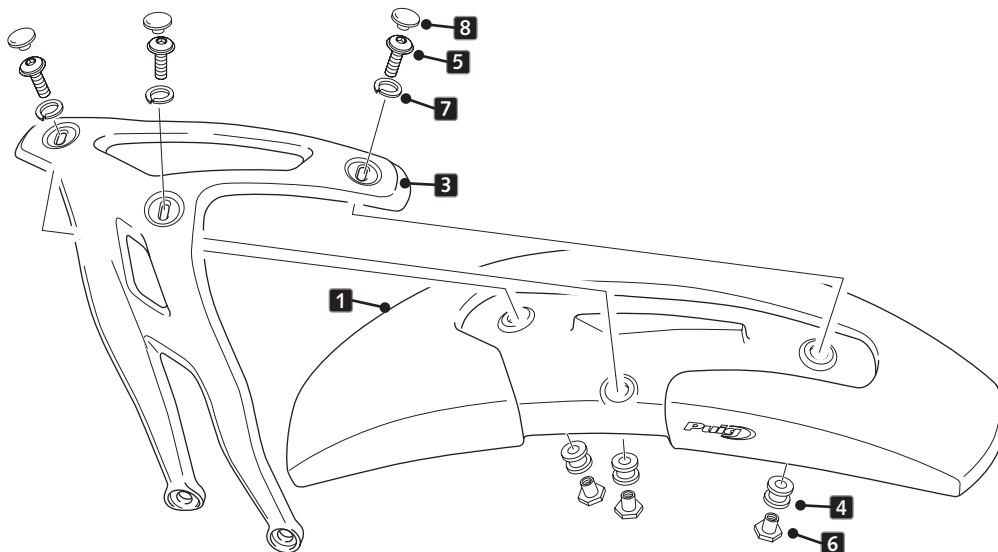
ASSEMBLY
MONTAJE



9 Par de apriete - 50 Nm
Tightening torque - 50 Nm

4

ASSEMBLY
MONTAJE



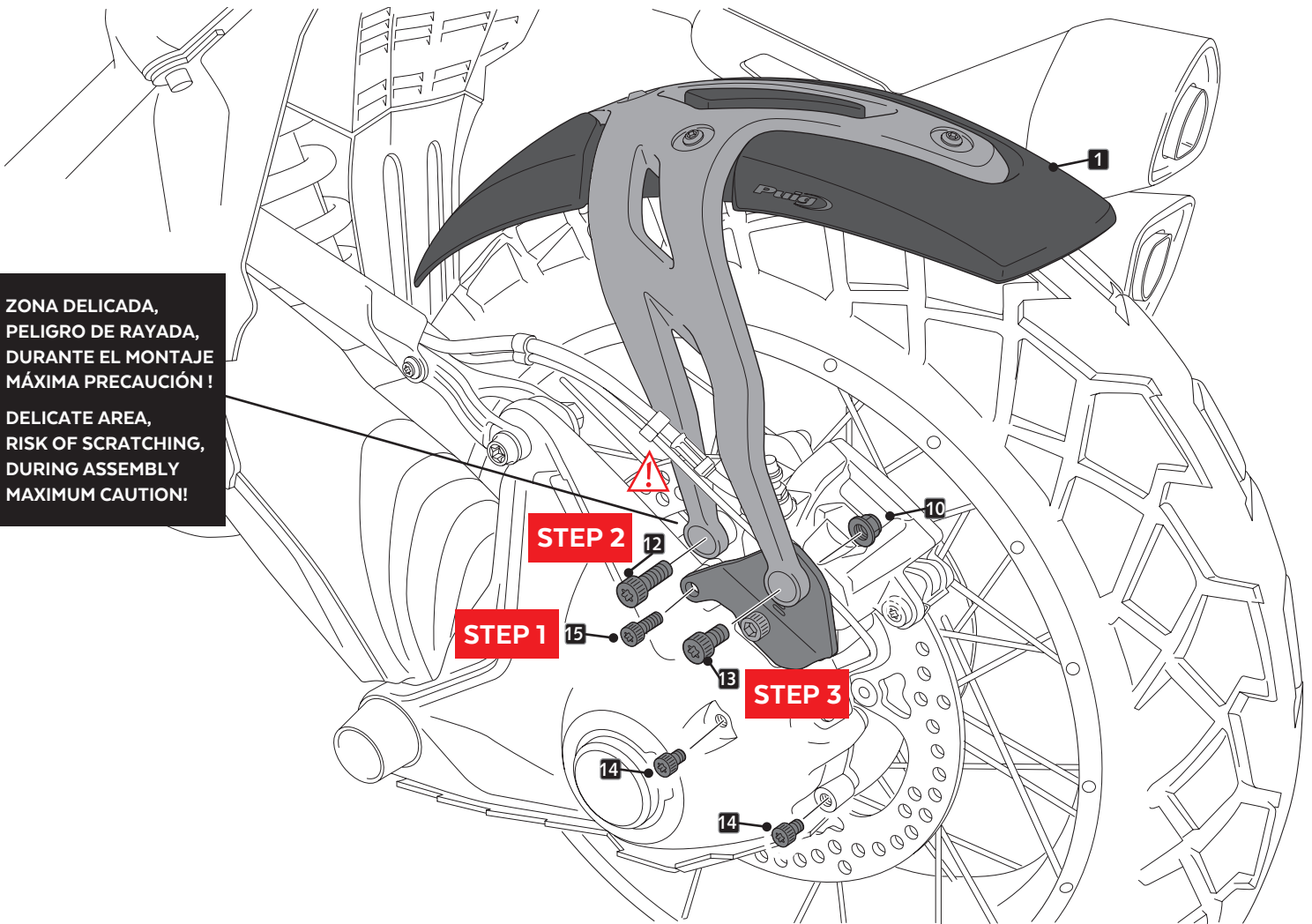
BMW R1300GS '23- / R1300GS ADVENTURE '24-

INSTRUCCIONES DE MONTAJE - MOUNTING INSTRUCTIONS - MONTAGEANLEITUNG

5A

ASSEMBLY
MONTAJE

OPTION A :
PUIG REAR MUDGUARD **WITHOUT**
ORIGINAL REAR MUDGUARD



ZONA DELICADA,
PELIGRO DE RAYADA,
DURANTE EL MONTAJE
MÁXIMA PRECAUCIÓN !

DELICATE AREA,
RISK OF SCRATCHING,
DURING ASSEMBLY
MAXIMUM CAUTION!

5 Par de apriete - 3 Nm
Tightening torque - 3 Nm

12 Par de apriete - 50 Nm
Tightening torque - 50 Nm

13 Par de apriete - 50 Nm
Tightening torque - 50 Nm

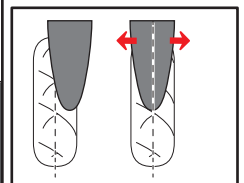
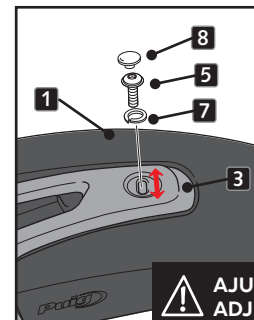
14 Par de apriete - 8 Nm
Tightening torque - 8 Nm

15 Par de apriete - 8 Nm
Tightening torque - 8 Nm

SE RECOMIENDA REALIZAR EL REAPRIETE
DE LA TORNILLERA CADA 1000 Km

IT IS RECOMMENDED TO CHECK TIGHTENING
OF THE BOLTS EVERY 1000 Km

14 SE RECOMIENDA UTILIZAR LÍQUIDO FIJADOR DE ROSCAS.
15 IT IS RECOMMENDED TO USE THREAD LOCKING LIQUID



**AJUSTAR POSICIÓN DE ID 1
ADJUST POSITION ID1**

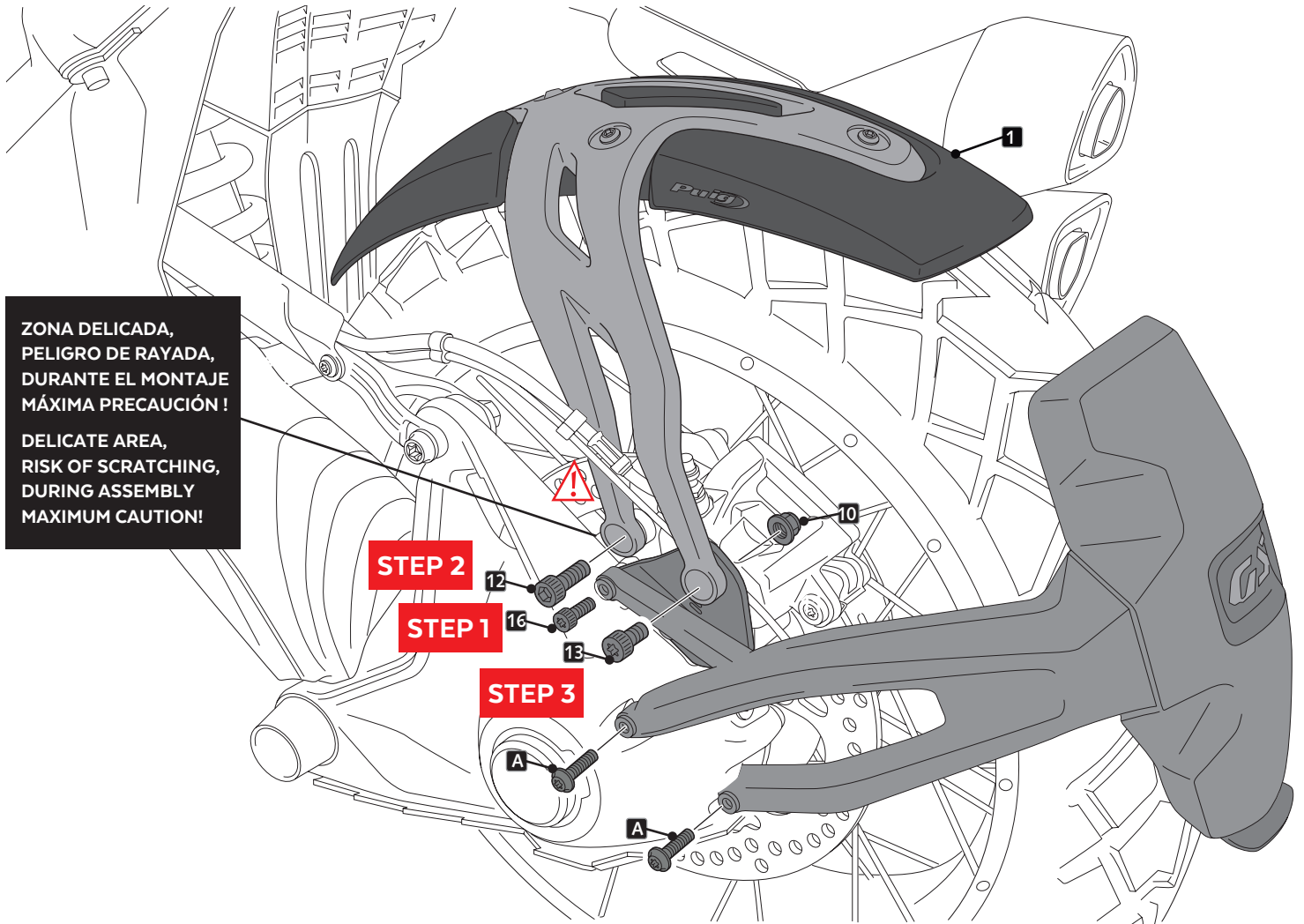
BMW R1300GS '23- / R1300GS ADVENTURE '24-

INSTRUCCIONES DE MONTAJE - MOUNTING INSTRUCTIONS - MONTAGEANLEITUNG

5B

ASSEMBLY
MONTAJE

OPTION B :
PUIG REAR MUDGUARD **WITH**
ORIGINAL REAR MUDGUARD



A PIEZA ORIGINAL
ORIGINAL PART

5 Par de apriete - 3 Nm
Tightening torque - 3 Nm

12 Par de apriete - 50 Nm
Tightening torque - 50 Nm

13 Par de apriete - 50 Nm
Tightening torque - 50 Nm

16 Par de apriete - 8 Nm
Tightening torque - 8 Nm

A Par de apriete - 8 Nm
Tightening torque - 8 Nm

**SE RECOMIENDA REALIZAR EL REAPRIETE
DE LA TORNILLERA CADA 1000 Km**

**IT IS RECOMMENDED TO CHECK TIGHTENING
OF THE BOLTS EVERY 1000 Km**

**A SE RECOMIENDA UTILIZAR LÍQUIDO FIJADOR DE ROSCAS.
16 IT IS RECOMMENDED TO USE THREAD LOCKING LIQUID**

